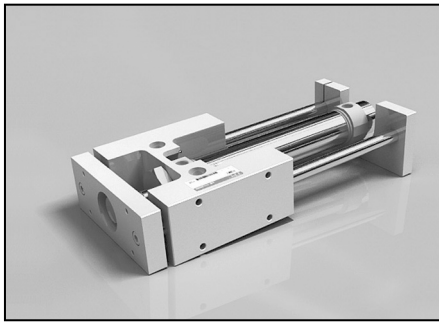


GX / AGX Series

Guide Cylinder Guide Unit / Bore Size : Ø20, Ø25, Ø32, Ø40

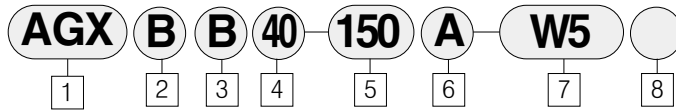
Actuator
Cylinder

GX/AGX Series



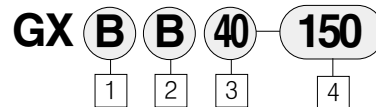
- Compact integration of AGX/GX series cylinder with guide rods. unit resists lateral loading and provides precise, non-rotating motion
- The AGX/GX series is equipped with a standard magnet for auto switch capability

How to Order



- | | | |
|---|---|---|
| <p>1 Type
Guide Cylinder
(Built-in Magnet)</p> <p>2 Type of Bearing
B : Bushing Type</p> <p>3 Mounting
B : Standard</p> <p>4 Bore Size
20 : Ø20mm</p> | <p>25 : Ø25mm
32 : Ø32mm
40 : Ø40mm</p> <p>5 Cylinder Stroke(mm)
※ Refer to the above table</p> <p>6 Cushion
Blank : Rubber Cushion
A : Air Cushion</p> | <p>7 Auto Switch
(Band mounted type / Grommet)
Blank : None
W4 : Reed Switch (Lead Wire of 0.5m)
W5L : Reed Switch (Lead Wire of 3m)</p> <p>8 Number of Switches
Blank : 2 pcs.
S : 1pc.
N : N pcs.</p> |
|---|---|---|

Guide Unit How to Order



- | | | |
|--|---|--|
| <p>1 Type of Bearing
B : Bushing Type</p> <p>2 Mounting
B : Standard</p> | <p>3 Bore Size
20 : Ø20mm
25 : Ø25mm
32 : Ø32mm
40 : Ø40mm</p> | <p>4 Cylinder Stroke(mm)
Ø20, Ø25: 25, 50, 75, 100, 125, 150, 200, 250, 300
Ø32 : 25, 50, 75, 100, 125, 150, 200, 250, 300, 350, 400
Ø40 : 25, 50, 75, 100, 125, 150, 200, 250, 300, 350, 400, 450, 500</p> |
|--|---|--|

Specifications/Standard Type

Fluid	Air
Action	Double Acting
Proof Pressure	15kgf/cm ² (213 psi)
Max. Operating Pressure	9.9kgf/cm ² (140 psi)
Min. Operating Pressure	0.5kgf/cm ² (7 psi)
Ambient and Fluid Temperature	-10°C ~ +70°C (14~160 °F)
Lubrication	Non-Lube
Thread Tolerance	KS 2 Class
Stroke Tolerance	+1.4 mm 0

Air Cylinder+Guide Unit

Action	Series	Bore Size (mm)	Port Size Rc(PT)	Standard Stroke (mm)	Description	Operating Pressure kgf/cm ² (psi)
Air Cylinder(AX) + Guide Unit(GX) 	AGX	Ø20	1/8	25, 50, 75, 100, 125, 150, 200, 250, 300	Bushing	0.5~9.9(7~140)
		Ø25				
		Ø32	1/4	25, 50, 75, 100, 125, 150, 200, 250, 300, 350, 400		
		Ø40				